

# IMS

# We

monitor your  
systems



**TAV** | TECHNOLOGIES  
THE FUTURE IS UNDER OUR WINGS

[www.tavtechnologies.aero](http://www.tavtechnologies.aero)

## ✈️ INFRASTRUCTURE MONITORING SYSTEM (IMS)

IMS is developed by TAV TECHNOLOGIES to detect and address any outages, or potential outages at the earliest possible time. The goal is to ensure that services are always up and available for your end users.

IMS (Infrastructure Monitoring System) is the complete visualization, monitoring and analysis solution for IT infrastructure and services, enabling the monitoring of complex and distributed structures.

- Multiple locations
- Different technologies
- All platforms
- Several customer groups

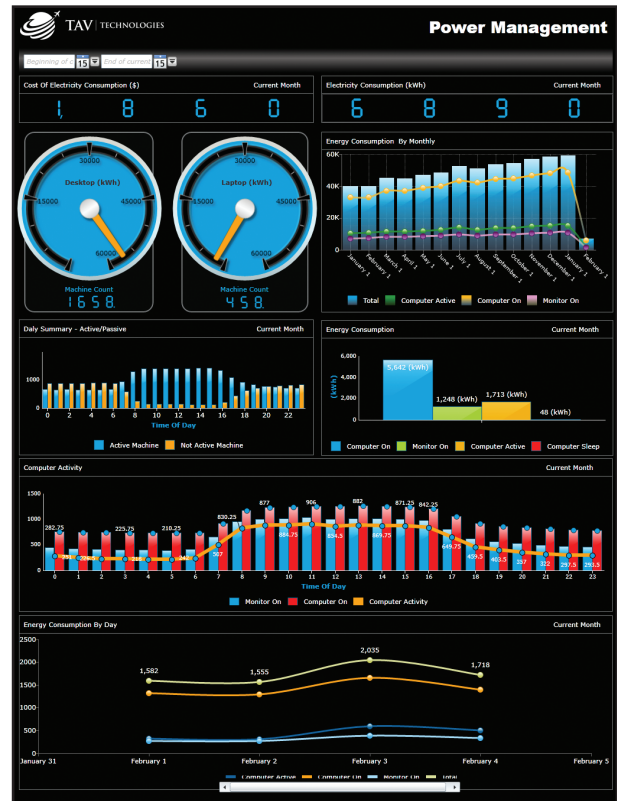
## ✈️ TAV TECHNOLOGIES IMS is an end-to-end solution for monitoring

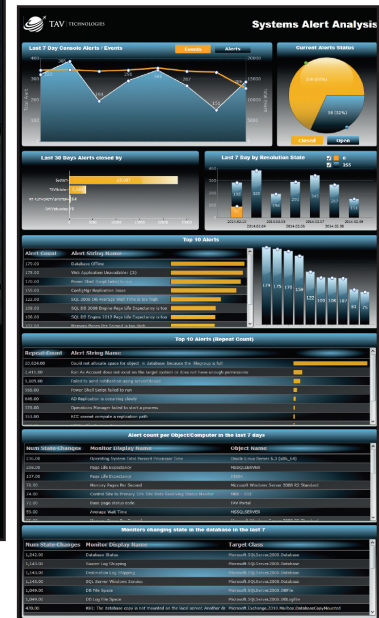
- Applications
- Servers
- Storage Systems
- Network Devices
- Local Area Networks
- Wide Area Networks
- Internet Connections
- Client Systems

IMS provides a single pane of glass to manage physical, virtual, and mobile systems as well as a deep visibility into the health, performance and availability of the complete infrastructure including applications, operating systems, hardware and network.

IMS can be customized to meet your specific needs, from simple availability to full performance monitoring using deep system interrogation with automated actions and responses, along with a series of escalation procedures. We employ multiple tools for managing and monitoring ICT systems in order to meet your requirements and help you decrease your operational costs.

Our monitoring and management solutions are already deployed in several airports and organizations for a wide range of infrastructure complexities and sizes.





## ✈️ TAV TECHNOLOGIES IMS KEY FEATURES AND BENEFITS

IMS monitors the availability, performance, utilization and live state of the ICT infrastructure and services in real-time and it enables higher quality services while reducing operational costs.

### ✈️ Major benefits provided by IMS are;

- End-to-end unified monitoring for complete infrastructure services
- Higher efficiency and control of infrastructure
- Improved service health, performance and availability
- Unified monitoring across private and public cloud services
- Identification of problems: when, where, what

### ✈️ IMS provides analysis of raw data from databases provided by different IT monitoring tools

- Desktop Monitoring Tools
- Network Monitoring Tools
- Server and System Monitoring Tools
- Call Monitoring Tools

## ✈ Multiple interface support for visualization;



• iPhone



• Windows 8



• Blackberry



• Wallboards



• iPad



• Android

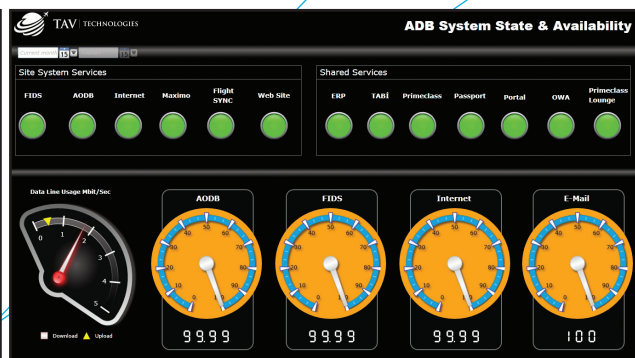
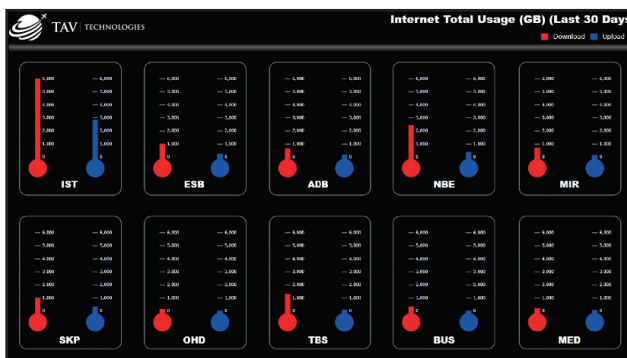
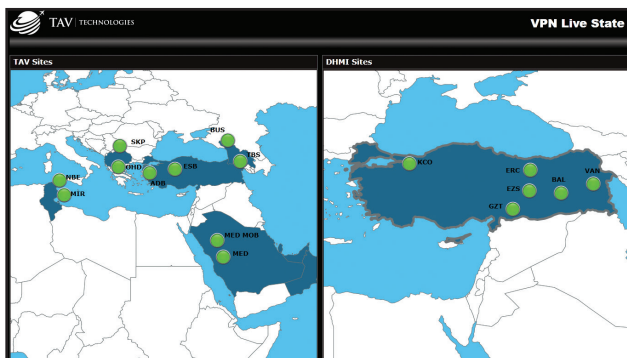


• Mobile Devices



• Workstation

- Visualized information can additionally be accessed from different devices via Business Intelligence (BI) reporting
- Selective monitoring of multiple computers, devices, services and applications
- Sends alerts when problems are identified, and provides information to help identify the cause of the problem and possible solutions (Troubleshooting)
- Performance and analytic dashboards for Business Intelligence
- Historical availability measures in gauge charts
- Proactive performance management with the help of system and service based bottleneck alerts
- Visualization and analysis of events help preventing incidents before they occur
- Immediate action plans for problems



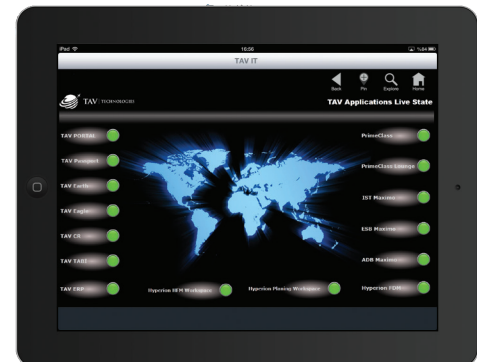
## ✈️ DASHBOARDS

- Systems Availability
- Systems State
- Systems Utilization
- Network Analysis and State
- Power Management
- Asset Management
- System Alert and Event Analysis
- Private Cloud, Data Center



## ✈️ NETWORK FLOW ANALYSIS

- Immediate problem detection
- Visibility including source, target, used port and service type in network flow
- Wireless Clients by Traffic
- Node Status
- Interfaces by Percent Utilization
- Site-to-Site VPN State



## ✈️ CAPABILITY CHECKLIST

- Are you able to monitor all systems in your ICT infrastructure?  
In real time?
- Are you able to monitor loads and detect performance bottlenecks  
of your servers, storage systems, core switches in real time?
- Are you analyzing alerts and events produced by your systems?
- Are you proactively monitoring the status of your systems,  
applications and services in real time?
- Are you able to measure power consumption  
of your servers and clients?
- Are you reporting historical accessibility  
status for your services, VPN Lines,  
Systems Infrastructure?
- Are you able to calculate total downtimes  
and availability of your services?





**TAV | TECHNOLOGIES**  
THE FUTURE IS UNDER OUR WINGS



[www.tavtechnologies.aero](http://www.tavtechnologies.aero)



[facebook.com/tavtechnologies](https://facebook.com/tavtechnologies)



[twitter.com/tavtechnologies](https://twitter.com/tavtechnologies)



[linkedin.com/company/tav-technologies](https://linkedin.com/company/tav-technologies)



[instagram.com/tavtechnologies](https://instagram.com/tavtechnologies)

