



Fortem DroneHunter™

Rogue Drone Pursuit and Capture System

DroneHunter is the world's fastest, most effective, fully autonomous drone defense solution. It is equipped with onboard Fortem TrueView™ radar, an inertial guidance system, a command and control platform, and a sophisticated AI pursue and multi-vector targeting system. DroneHunter will lock onto, pursue, intimidate, film, capture, tether and safely carry the offending drone to a designated area.

DroneHunter is an optional part of the Fortem SkyDome™ platform that provides total airspace awareness, safety and security around buildings, a campus or metro-area. SkyDome can be configured to autonomously cue DroneHunters. It also provides manual intervention override options for DroneHunter as needed to meet situational requirements. The DroneHunter system can be adapted to function on any drone platform.

Why DroneHunter?

- Effective day or night, in all weather and ground conditions including smoke, clouds, rain, snow and fog
- Tracks, pursues, videos, and captures intruding drones, including waypoint-directed, non-RF-emitting intruder drones, known as "Dark Drones"
- Fully autonomous pursue and defeat operation with optional operator intervention and override
- Stops threats at a safe distance from the protected location and delivers rogue drones to a secured area
- Outflies and outmaneuvers a wide range of drones
- Extends optics, IR and radar reach
- Force multiplier
- Keep personnel safe while providing situational awareness in dangerous areas
- Customizable payload platform



Components of the DroneHunter System

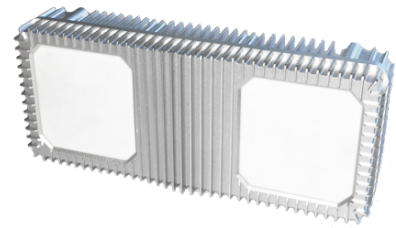


Drone Platforms

High-strength airframe with responsive motors and propellers
Brushless high torque motors
Weather hardened construction
Fortem autonomous flight computer
Flight time: configurable
Mission range: configurable
Communications link options range: 5km (3mi) or configurable to greater distances
Temperature: -10°C to 55°C (14°F to 131°F)
Non-COTS, DoD Compliant
Payload: varies by drone platform
Capture speed: varies by drone platform

Fortem TrueView Radar: Detects and Tracks in All Conditions

Long distance detection for small drones
±2° azimuth and elevation accuracy
Integrated INS/GPS for high accuracy
Scan and patrol airspace autonomously for rogue drones
Day and night operation



Fortem Netgun™ and Other Effectors

Safely captures intruder drones with no collateral damage
Computer-optimized autonomous net launch timing
Extremely high capture rate with auto-reacquire/capture
Computer-optimized capture range
Tether target tow-away and non-tether net options
Optional electronic tether release for secondary target acquire
Nets shoot at 40m/s (80mph)
Multiple net sizes and mitigation techniques
Netheads that can be reloaded in seconds
AI algorithms adjust for wind
Custom Effectors Available

SkyDome Sends Position Cues to DroneHunter and Other Sensors

Detects intruders miles from protected area
Can provide up to networked radar hemisphere of coverage in any terrain and for configurable distances



Contact Fortem Technologies

(385) 375-3233 | info@fortemtech.com | 2015 W. Grove Parkway Pleasant Grove, UT 84062



Copyright © 2019 Fortem Technologies, Inc. TrueView™ R20, TrueView™ R30, DroneHunter™, SkyDome™ and all associated logos are trademarks of Fortem Technologies, Inc. All other product names as they appear are trademarks or registered trademarks of their respective holders. The Company shall not be liable for any errors contained herein or for any damages arising out of or related to this document or the information contained therein, even if the Company has been advised of the possibility of such damages. This document is intended for informational and instructional purposes only. The Company reserves the right to make changes in the specifications and other information contained in this document without prior notification. | 07/19 | 12B-0007-003